

25 W CEDAR ST, STE 110  
PENSACOLA, FL 32502  
850.435.7424

**HAWKS LANDING**  
SECTION 5, TOWNSHIP 1N., RANGE 29W.  
**SANTA ROSA COUNTY**  
A PROJECT FOR 68 VENTURES

SEAL

SCALE

REVISIONS

NO.	DESCRIPTION	DATE

DRAWN BY \_\_\_\_\_ EM  
 APPROVED BY \_\_\_\_\_ MJ  
 CHECKED BY \_\_\_\_\_ MJ  
 DATE \_\_\_\_\_ SEPTEMBER 2017

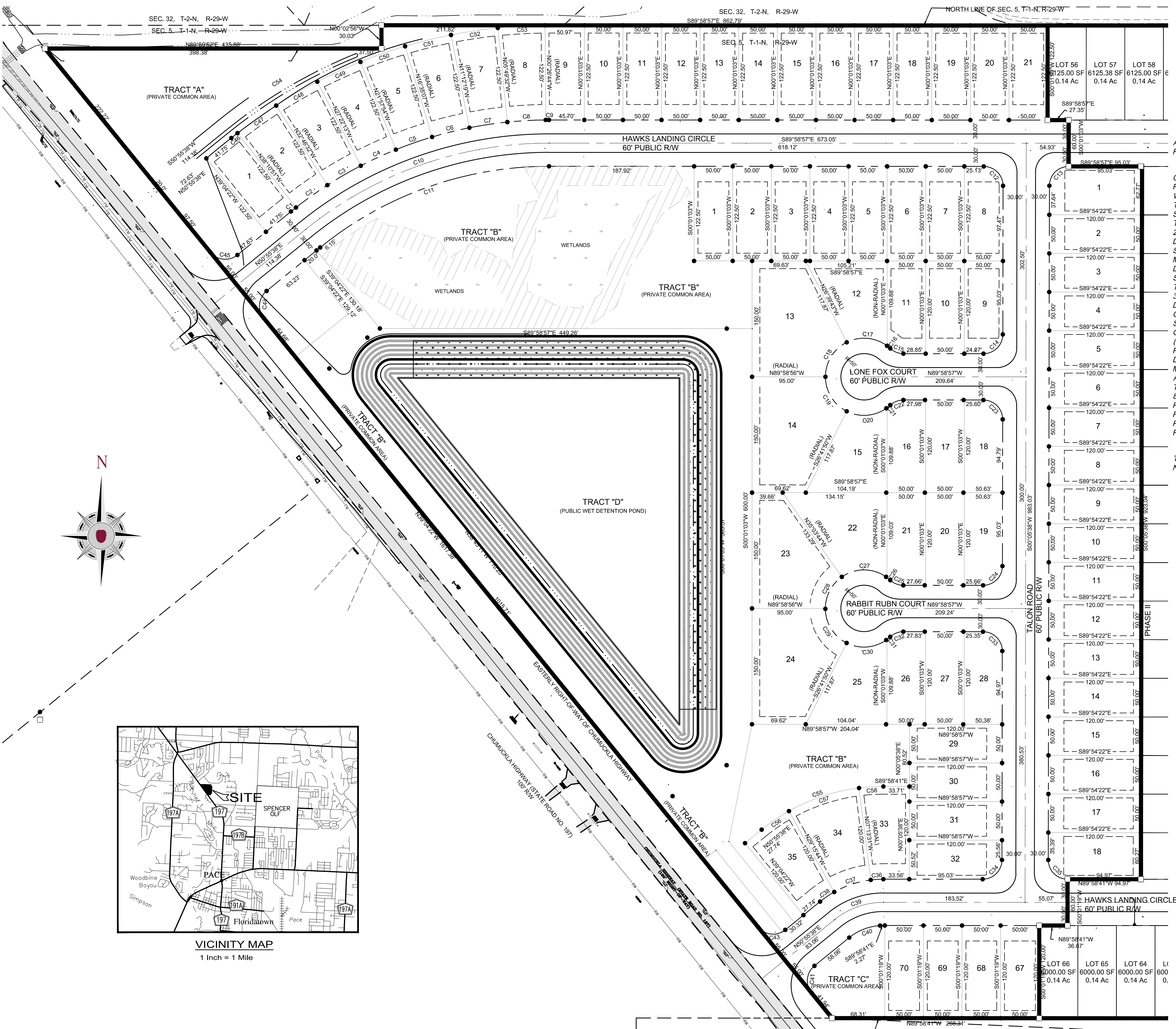
TITLE

PHASE I

Dewberry | PREBLE-RISH  
25 W CEDAR STREET, SUITE 110  
PENSACOLA, FLORIDA 32502

PROJECT NO. 50094831  
SHEET NO.

# HAWK'S LANDING PHASE 1 78 LOTS



**DESCRIPTION:**

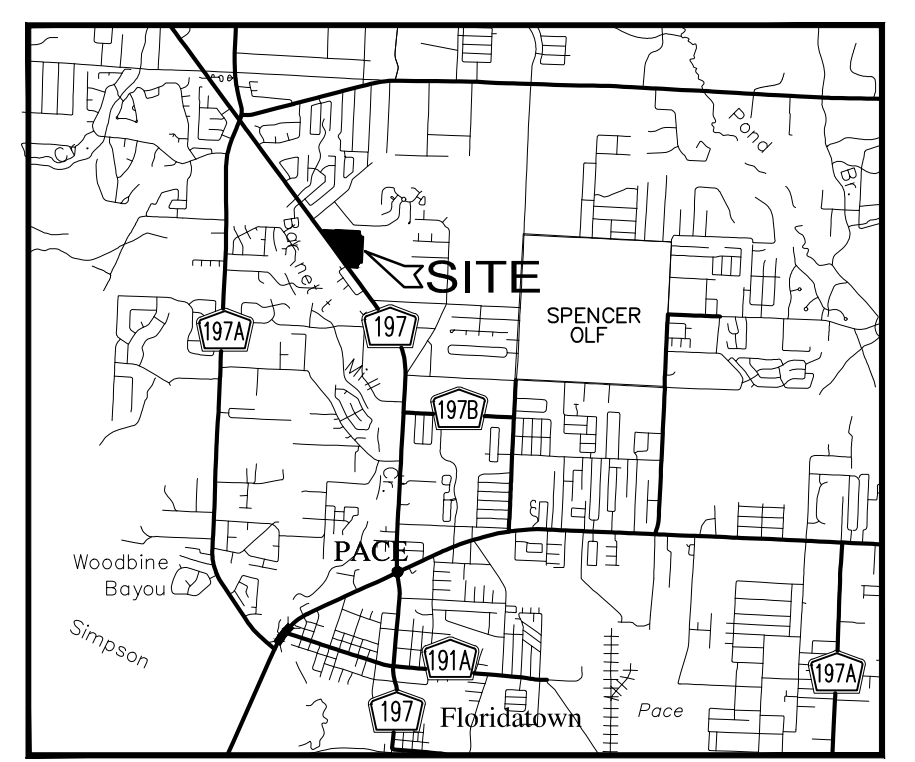
A PORTION OF SECTION 5, TOWNSHIP 1 NORTH, RANGE 29 WEST LYING IN SANTA ROSA COUNTY, FLORIDA AND BEING MORE PARTICULARLY DESCRIBED AS FOLLOWS:

COMMENCE AT THE NORTHEAST CORNER OF SECTION 5, TOWNSHIP 1 NORTH, RANGE 29 WEST AND RUN THENCE NORTH 89 DEGREES 58 MINUTES 57 SECONDS WEST ALONG THE NORTH LINE OF SAID SECTION 5, A DISTANCE OF 722.63 FEET TO THE POINT OF BEGINNING OF THE PROPERTY HEREIN DESCRIBED; THENCE RUN SOUTH 00 DEGREES 01 MINUTES 03 SECONDS WEST, A DISTANCE OF 122.50 FEET; THENCE RUN SOUTH 89 DEGREES 58 MINUTES 57 SECONDS EAST, A DISTANCE OF 27.35 FEET; THENCE RUN SOUTH 00 DEGREES 01 MINUTES 03 SECONDS WEST, A DISTANCE OF 60.00 FEET; THENCE RUN SOUTH 89 DEGREES 58 MINUTES 57 SECONDS EAST, A DISTANCE OF 95.03 FEET; THENCE RUN SOUTH 00 DEGREES 05 MINUTES 38 SECONDS WEST, A DISTANCE OF 923.04 FEET; THENCE RUN NORTH 89 DEGREES 58 MINUTES 41 SECONDS WEST, A DISTANCE OF 94.97 FEET; THENCE RUN SOUTH 00 DEGREES 01 MINUTES 19 SECONDS WEST, A DISTANCE OF 60.00 FEET; THENCE RUN NORTH 89 DEGREES 58 MINUTES 41 SECONDS WEST, A DISTANCE OF 36.67 FEET; THENCE RUN SOUTH 00 DEGREES 01 MINUTES 19 SECONDS WEST, A DISTANCE OF 120.00 FEET TO THE SOUTH LINE OF THE NORTHEAST ONE-QUARTER OF THE NORTHEAST ONE-QUARTER OF SAID SECTION 5; THENCE ALONG SAID SOUTH LINE RUN NORTH 89 DEGREES 58 MINUTES 41 SECONDS WEST, A DISTANCE OF 268.31 FEET TO THE EASTERLY RIGHT-OF-WAY OF CHUMUCKLA HIGHWAY (COUNTY ROAD NO. 197, 100' WIDE RIGHT-OF-WAY); THENCE ALONG SAID EASTERLY RIGHT-OF-WAY LINE RUN NORTH 39 DEGREES 04 MINUTES 22 SECONDS WEST, A DISTANCE OF 1617.38 FEET TO THE WESTERNMOST SOUTHWEST CORNER OF PACE MILL CREEK, ACCORDING TO THE PLAT THEREOF AS RECORDED IN PLAT BOOK 11, AT PAGES 31 AND 32 OF THE PUBLIC RECORDS OF SANTA ROSA COUNTY, FLORIDA; THENCE ALONG THE SOUTH LINE OF SAID PLAT OF PACE MILL CREEK RUN NORTH 89 DEGREES 59 MINUTES 52 SECONDS EAST, A DISTANCE OF 435.88 FEET; THENCE RUN NORTH 00 DEGREES 02 MINUTES 56 SECONDS WEST, A DISTANCE OF 30.03 FEET TO THE NORTH LINE OF SAID SECTION 5; THENCE ALONG SAID NORTH LINE RUN SOUTH 89 DEGREES 58 MINUTES 57 SECONDS EAST, A DISTANCE OF 862.79 FEET TO THE POINT OF BEGINNING.

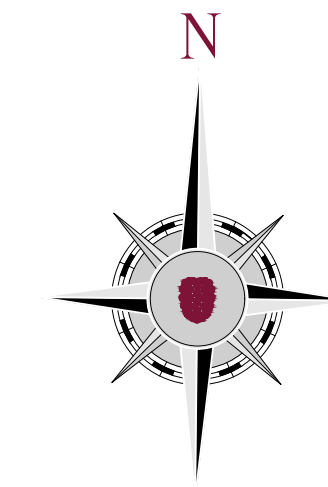
TRACT CONTAINS 25.95 ACRES, MORE OR LESS, AND LIES IN SECTION 5, TOWNSHIP 1 NORTH, RANGE 29 WEST, SANTA ROSA COUNTY, FLORIDA.

**INDEX OF SHEETS:**

- 1. PHASE I
- 2. PHASE II
- 3. PHASE III



VICINITY MAP  
1 Inch = 1 Mile



E  
D  
C  
B  
A

1

2

3

4

5



HAWKS LANDING  
SECTION 5, TOWNSHIP 1N., RANGE 29W.  
SANTA ROSA COUNTY  
A PROJECT FOR 68 VENTURES

SEAL

SCALE

REVISIONS

NO.	DESCRIPTION	DATE

DRAWN BY \_\_\_\_\_ EM  
 APPROVED BY \_\_\_\_\_ MJ  
 CHECKED BY \_\_\_\_\_ MJ  
 DATE \_\_\_\_\_ SEPTEMBER 2017

TITLE

PHASE II

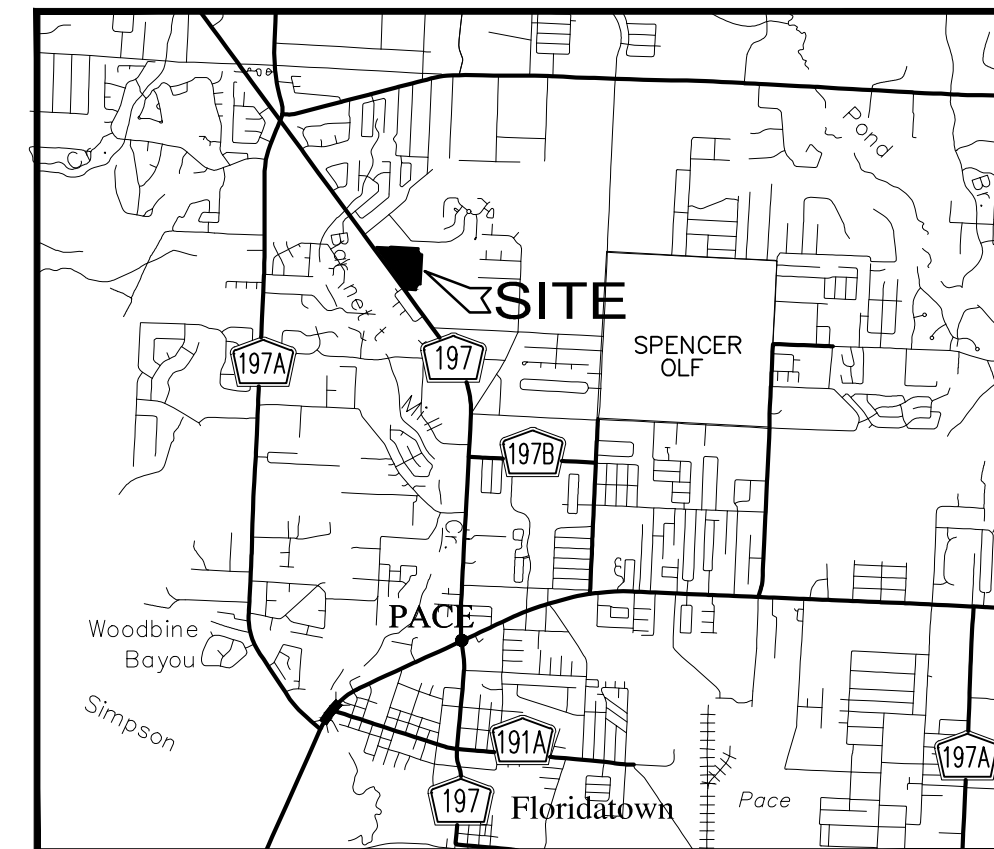
PROJECT NO. 50094831  
SHEET NO.

DESCRIPTION:

A PORTION OF SECTION 5, TOWNSHIP 1 NORTH, RANGE 29 WEST LYING IN SANTA ROSA COUNTY, FLORIDA AND BEING MORE PARTICULARLY DESCRIBED AS FOLLOWS:

COMMENCE AT THE NORTHEAST CORNER OF SECTION 5, TOWNSHIP 1 NORTH, RANGE 29 WEST AND RUN THENCE NORTH 89 DEGREES 58 MINUTES 57 SECONDS WEST ALONG THE NORTH LINE OF SAID SECTION 5, A DISTANCE OF 722.63 FEET TO THE POINT OF BEGINNING OF THE PROPERTY HEREIN DESCRIBED: THENCE RUN SOUTH 00 DEGREES 01 MINUTES 03 SECONDS WEST, A DISTANCE OF 122.50 FEET; THENCE RUN SOUTH 89 DEGREES 58 MINUTES 57 SECONDS EAST, A DISTANCE OF 27.35 FEET; THENCE RUN SOUTH 00 DEGREES 01 MINUTES 03 SECONDS WEST, A DISTANCE OF 60.00 FEET; THENCE RUN SOUTH 89 DEGREES 58 MINUTES 57 SECONDS EAST, A DISTANCE OF 95.03 FEET; THENCE RUN SOUTH 00 DEGREES 05 MINUTES 38 SECONDS WEST, A DISTANCE OF 923.04 FEET; THENCE RUN NORTH 89 DEGREES 58 MINUTES 41 SECONDS WEST, A DISTANCE OF 94.97 FEET; THENCE RUN SOUTH 00 DEGREES 01 MINUTES 19 SECONDS WEST, A DISTANCE OF 60.00 FEET; THENCE RUN NORTH 89 DEGREES 58 MINUTES 41 SECONDS WEST, A DISTANCE OF 36.67 FEET; THENCE RUN SOUTH 00 DEGREES 01 MINUTES 19 SECONDS WEST, A DISTANCE OF 120.00 FEET TO THE SOUTH LINE OF THE NORTHEAST ONE-QUARTER OF THE NORTHEAST ONE-QUARTER OF SAID SECTION 5; THENCE ALONG SAID SOUTH LINE RUN NORTH 89 DEGREES 58 MINUTES 41 SECONDS WEST, A DISTANCE OF 288.31 FEET TO THE EASTERLY RIGHT-OF-WAY OF CHUMUCKLA HIGHWAY (COUNTY ROAD NO. 197, 100' WIDE RIGHT-OF-WAY); THENCE ALONG SAID EASTERLY RIGHT-OF-WAY LINE RUN NORTH 39 DEGREES 04 MINUTES 22 SECONDS WEST, A DISTANCE OF 1617.38 FEET TO THE WESTERMOST SOUTHWEST CORNER OF PACE MILL CREEK, ACCORDING TO THE PLAT THEREOF AS RECORDED IN PLAT BOOK 11, AT PAGES 31 AND 32 OF THE PUBLIC RECORDS OF SANTA ROSA COUNTY, FLORIDA; THENCE ALONG THE SOUTH LINE OF SAID PLAT OF PACE MILL CREEK RUN NORTH 89 DEGREES 59 MINUTES 52 SECONDS EAST, A DISTANCE OF 435.88 FEET; THENCE RUN NORTH 00 DEGREES 02 MINUTES 56 SECONDS WEST, A DISTANCE OF 30.03 FEET TO THE NORTH LINE OF SAID SECTION 5; THENCE ALONG SAID NORTH LINE RUN SOUTH 89 DEGREES 58 MINUTES 57 SECONDS EAST, A DISTANCE OF 862.79 FEET TO THE POINT OF BEGINNING.

TRACT CONTAINS 25.95 ACRES, MORE OR LESS, AND LIES IN SECTION 5, TOWNSHIP 1 NORTH, RANGE 29 WEST, SANTA ROSA COUNTY, FLORIDA.

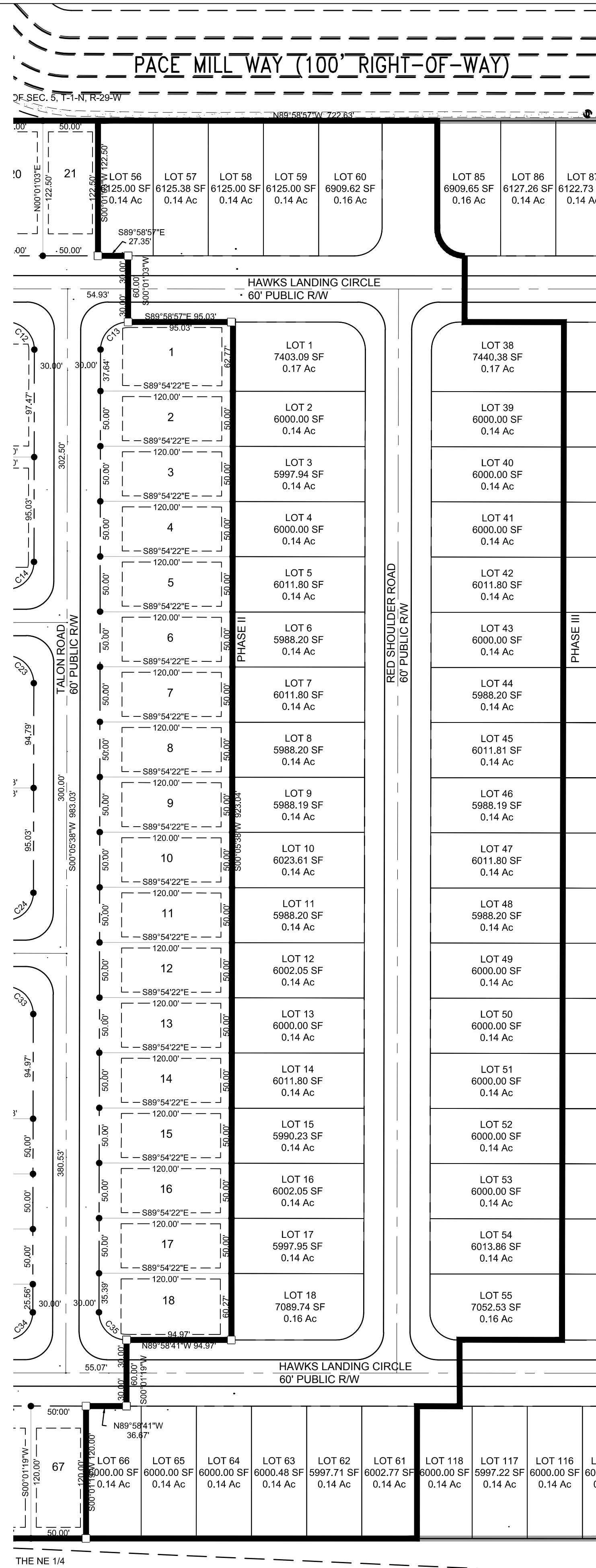


VICINITY MAP  
1 Inch = 1 Mile

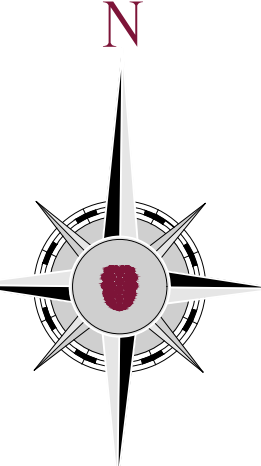
- INDEX OF SHEETS:
1. PHASE I
  2. PHASE II
  3. PHASE III

Dewberry | PREBLE-RISH  
25 W CEDAR STREET, SUITE 110  
PENSACOLA, FLORIDA 32502

# HAWK'S LANDING PHASE 2 47 LOTS



E  
D  
C  
B  
A





HAWKS LANDING  
SECTION 5, TOWNSHIP 1N., RANGE 29W.  
SANTA ROSA COUNTY  
A PROJECT FOR 68 VENTURES

SEAL

SCALE

REVISIONS

NO.	DESCRIPTION	DATE

DRAWN BY \_\_\_\_\_ EM  
APPROVED BY \_\_\_\_\_ MJ  
CHECKED BY \_\_\_\_\_ MJ  
DATE \_\_\_\_\_ SEPTEMBER 2017

TITLE

PHASE III

PROJECT NO. 50094831  
SHEET NO.

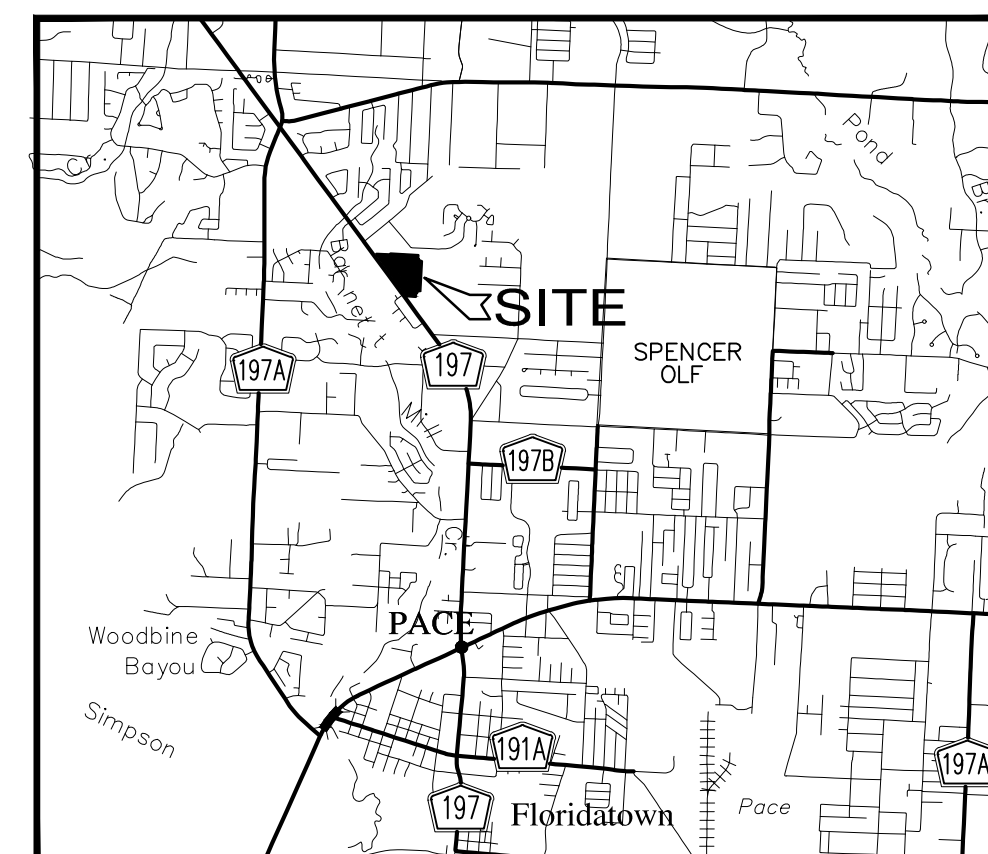
3 of 3

# HAWK'S LANDING PHASE 3 52 LOTS

**DESCRIPTION:**  
A PORTION OF SECTION 5, TOWNSHIP 1 NORTH, RANGE 29 WEST LYING IN SANTA ROSA COUNTY, FLORIDA AND BEING MORE PARTICULARLY DESCRIBED AS FOLLOWS:

COMMENCE AT THE NORTHEAST CORNER OF SECTION 5, TOWNSHIP 1 NORTH, RANGE 29 WEST AND RUN THENCE NORTH 89 DEGREES 58 MINUTES 57 SECONDS WEST ALONG THE NORTH LINE OF SAID SECTION 5, A DISTANCE OF 722.63 FEET TO THE POINT OF BEGINNING OF THE PROPERTY HEREIN DESCRIBED; THENCE RUN SOUTH 00 DEGREES 01 MINUTES 03 SECONDS WEST, A DISTANCE OF 122.50 FEET; THENCE RUN SOUTH 89 DEGREES 58 MINUTES 57 SECONDS EAST, A DISTANCE OF 27.35 FEET; THENCE RUN SOUTH 00 DEGREES 01 MINUTES 03 SECONDS WEST, A DISTANCE OF 60.00 FEET; THENCE RUN SOUTH 89 DEGREES 58 MINUTES 57 SECONDS EAST, A DISTANCE OF 95.03 FEET; THENCE RUN SOUTH 00 DEGREES 05 MINUTES 38 SECONDS WEST, A DISTANCE OF 823.04 FEET; THENCE RUN NORTH 89 DEGREES 58 MINUTES 41 SECONDS WEST, A DISTANCE OF 94.97 FEET; THENCE RUN SOUTH 00 DEGREES 01 MINUTES 19 SECONDS WEST, A DISTANCE OF 60.00 FEET; THENCE RUN NORTH 89 DEGREES 58 MINUTES 41 SECONDS WEST, A DISTANCE OF 36.67 FEET; THENCE RUN SOUTH 00 DEGREES 01 MINUTES 19 SECONDS WEST, A DISTANCE OF 120.00 FEET TO THE SOUTH LINE OF THE NORTHEAST ONE-QUARTER OF THE NORTHEAST ONE-QUARTER OF SAID SECTION 5; THENCE ALONG SAID SOUTH LINE RUN NORTH 89 DEGREES 58 MINUTES 41 SECONDS WEST, A DISTANCE OF 268.31 FEET TO THE EASTERLY RIGHT-OF-WAY OF CHUMUCKLA HIGHWAY (COUNTY ROAD NO. 197, 100' WIDE RIGHT-OF-WAY); THENCE ALONG SAID EASTERLY RIGHT-OF-WAY LINE RUN NORTH 39 DEGREES 04 MINUTES 22 SECONDS WEST, A DISTANCE OF 1617.38 FEET TO THE WESTERNMOST SOUTHWEST CORNER OF PACE MILL CREEK, ACCORDING TO THE PLAT THEREOF AS RECORDED IN PLAT BOOK 11, AT PAGES 31 AND 32 OF THE PUBLIC RECORDS OF SANTA ROSA COUNTY, FLORIDA; THENCE ALONG THE SOUTH LINE OF SAID PLAT OF PACE MILL CREEK RUN NORTH 89 DEGREES 59 MINUTES 52 SECONDS EAST, A DISTANCE OF 435.88 FEET; THENCE RUN NORTH 00 DEGREES 02 MINUTES 56 SECONDS WEST, A DISTANCE OF 30.03 FEET TO THE NORTH LINE OF SAID SECTION 5; THENCE ALONG SAID NORTH LINE RUN SOUTH 89 DEGREES 58 MINUTES 57 SECONDS EAST, A DISTANCE OF 862.79 FEET TO THE POINT OF BEGINNING.

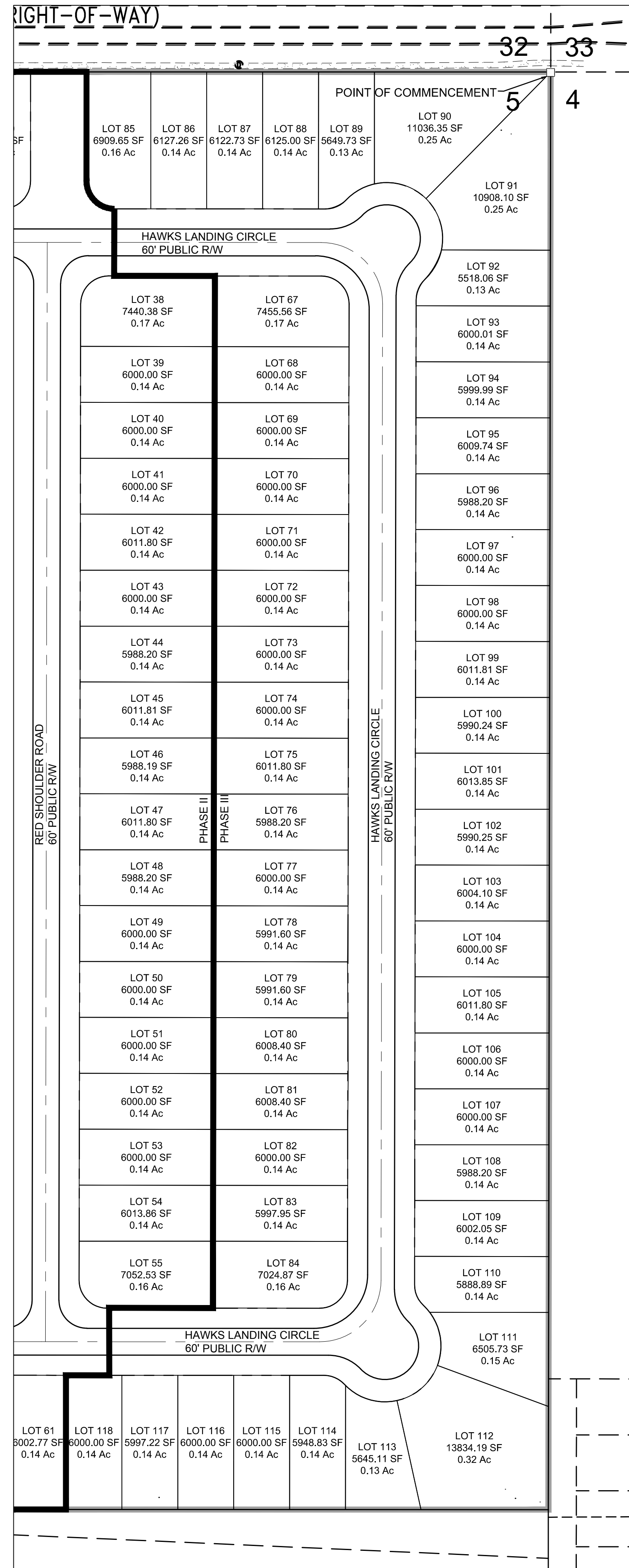
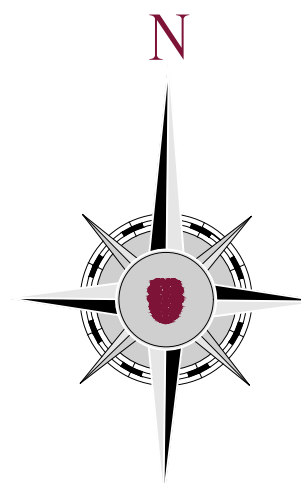
TRACT CONTAINS 25.95 ACRES, MORE OR LESS, AND LIES IN SECTION 5, TOWNSHIP 1 NORTH, RANGE 29 WEST, SANTA ROSA COUNTY, FLORIDA.



VICINITY MAP  
1 Inch = 1 Mile

**INDEX OF SHEETS:**  
1. PHASE I  
2. PHASE II  
3. PHASE III

Dewberry | PREBLE-RISH  
25 W CEDAR STREET, SUITE 110  
PENSACOLA, FLORIDA 32502



E  
D  
C  
B  
A

1

2

3

4

5